

# SAHARA S-SERIES

SHEET-AND-POST DRY TRUCK BODY



For last-mile delivery carriers who value high quality and flexibility, the Sahara S-Series truck body combines a proven design with a unique tie-down system for efficiency and reliability.



## KEY FEATURES

### Front Wall Construction

The front wall is constructed with a one-piece extruded aluminum top rail and a composite plate design, making the body lighter because it requires no uprights. These features provide added strength and leak prevention. A corrosion-resistant galvaneal front bottom rail is welded to the deck front channel for additional reinforcement and durability.

### Sidewall Protection

Sidewall protection is provided by a 12" laminated hardwood scuffband. Additional scuffband options include PunctureGuard, HDPE plastic and corrugated steel.

### Roof System

An aluminum roof sheet is supported by 18-gauge galvanized steel, anti-snag roof bows mounted on 24" centers. A puncture-resistant translucent fiberglass roof sheet is also available.

### Floor System

The standard floor system is a sturdy, fork-truck-loading capable 1-1/8" hardwood. 3" wax-coated steel crossmembers are mounted on 12" centers with an option for 8" centers in the rear 56".

Floors can be further protected with an optional wax floor treatment. It protects hardwood floors against the harshest operating conditions by penetrating the surface of hardwood with solid paraffin wax, creating a virtually waterproof barrier of protection on the topside of the floor.

An optional hot-melt polyurethane reactive undercoating can be used on the underside of trailer floors, serving as an additional moisture barrier to increase durability and reduce floor maintenance costs.



Visit [greatdane.com](http://greatdane.com) to learn more about the SAHARA S-Series and Great Dane's full line of trailers, truck bodies, and innovations.



**Great Dane**

# SAHARA S-SERIES SHEET-AND-POST

## Versatility

The Sahara S-Series can be customized with an array of features and options, including horizontal wood slats for flexible load securement, lining materials and logistic track that can be placed in various positions.

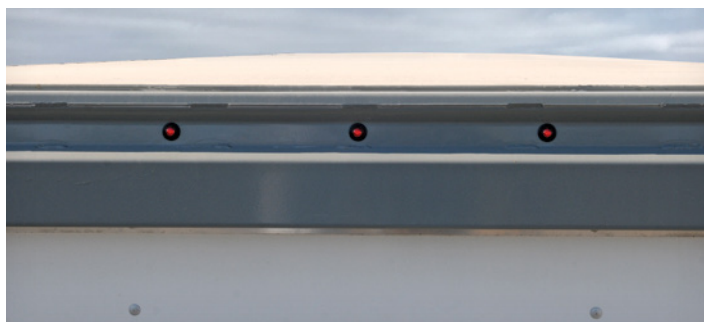


Shown with optional Maxon Tuk-A-Way Lift.



## Blade Lock Side Door

Great Dane's side door design delivers unparalleled performance. The Sahara is available with multiple side door locations to provide quick and easy access to cargo. The unique blade lock exerts constant pressure along the full height of the door. The low-profile blade lock design eliminates protruding hinges and lock rods, reducing potential for damage.



## Lighting Options

The LED Exterior Light Package features Grote's MicroNova® DOT lamps and dual-intensity ID cluster lights, along with the Long Life Light System. This sealed harness prevents moisture intrusion, allows for custom wiring, is extremely durable, and is backed by a 10-year warranty. The exterior lights are recessed into an integral gutter in the rear frame for additional damage protection.

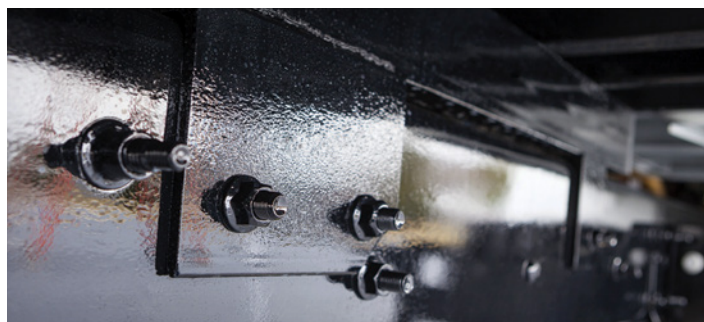


## EnduroGuard Rear Frame

The EnduroGuard rear frame provides an effective barrier against corrosion that delivers enhanced durability and enduring appearance throughout the life of the truck body. The structurally superior rear frame design resists scaling, flaking and discoloration.

## Rear Safety

The Sahara C-Series comes standard with a roll-up rear door and a rear impact guard featuring a 4" sill extension with an integrated guard and steps and grabhandles on both the road and curb sides for additional safety when loading and unloading cargo.



## Body Tie-Down System

The innovative body tie-down system offers secure mounting with reduced maintenance. It eliminates U-bolts, U-bolt maintenance, filler strip compression, rot and kick-out.