

SAHARA C-SERIES

COMPOSITE DRY TRUCK BODY



For last-mile delivery carriers who value efficiency and reliability, the versatile Sahara C-Series combines proven trailer technology with the flexibility of a truck body.



KEY FEATURES

Front Wall Construction

The front wall is constructed with a one-piece extruded aluminum top rail and a composite plate design, making the body lighter because it requires no uprights. These features provide added strength and leak prevention. A corrosion-resistant galvaneal front bottom rail is welded to the deck front channel for additional reinforcement and durability.

Sidewall Lining and Protection

The Sahara C-Series comes standard with four rows of horizontal slats mounted on Z-posts with two rows of horizontal logistic track for flexible load securement. Sidewall protection is provided by a 12" laminated hardwood scuffband.

Floor System

The standard floor system is a sturdy, fork-truck-loading capable 1-1/8" hardwood. 3" wax-coated steel crossmembers are mounted on 12" centers with an option for 8" centers in the rear 56".

Floors can be further protected with an optional wax floor treatment. It protects hardwood floors against the harshest operating conditions by penetrating the surface of hardwood with solid paraffin wax, creating a virtually waterproof barrier of protection on the topside of the floor.

An optional hot-melt polyurethane reactive undercoating can be used on the underside of trailer floors, serving as an additional moisture barrier to increase durability and reduce floor maintenance costs.

Roof System

An aluminum roof sheet is supported by 18-gauge galvanized steel, anti-slag roof bows mounted on 24" centers. A puncture-resistant translucent fiberglass roof sheet (pictured) is also available.



Visit greatdane.com to learn more about the SAHARA C-Series and Great Dane's full line of trailers, truck bodies, and innovations.



Great Dane

SAHARA C-SERIES COMPOSITE



Rear Safety

The Sahara C-Series comes standard with a roll-up rear door and a rear impact guard featuring a 4" sill extension with an integrated guard and steps and grabhandles on both the road and curb sides for additional safety when loading and unloading cargo.

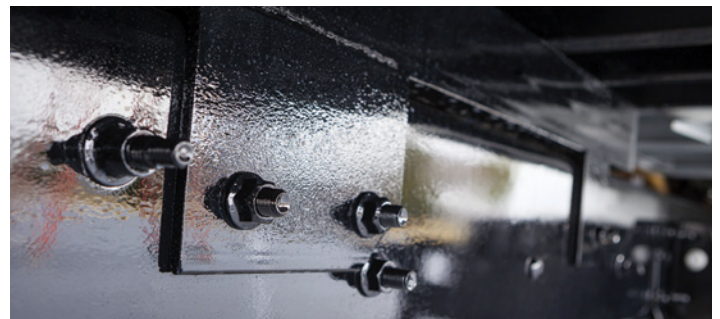
EnduroGuard Rear Frame

The EnduroGuard rear frame provides an effective barrier against corrosion that delivers enhanced durability and enduring appearance throughout the life of the truck body. The structurally superior rear frame design resists scaling, flaking and discoloration.



Lighting Options

The LED Exterior Light Package features Grote's MicroNova® DOT lamps and dual-intensity ID cluster lights, along with the Long Life Light System. This sealed harness prevents moisture intrusion, allows for custom wiring, is extremely durable, and is backed by a 10-year warranty. The exterior lights are recessed into an integral gutter in the rear frame for additional damage protection.



Body Tie-Down System

The innovative body tie-down system offers secure mounting with reduced maintenance. It eliminates U-bolts, U-bolt maintenance, filler strip compression, rot and kick-out.