

JOHNSON S-SERIES

REFRIGERATED SLIDE-IN TRUCK BODY

The Johnson S-Series is Great Dane's smallest fiberglass composite, temperature-controlled truck body.

This 8-foot insulated body is designed to deliver high quality performance for a wide variety of markets.



KEY FEATURES

Small Size for Maximum Efficiency

This 8-foot insulated truck body with a rear-access door is engineered to easily fit in a heavy-duty $\frac{3}{4}$ -ton or 1-ton pickup truck, depending on the cargo requirements. The Johnson S-Series is the perfect option for shorter delivery routes, and is designed for medium and frozen product applications for a wide variety of markets.

Interior Liner Protection

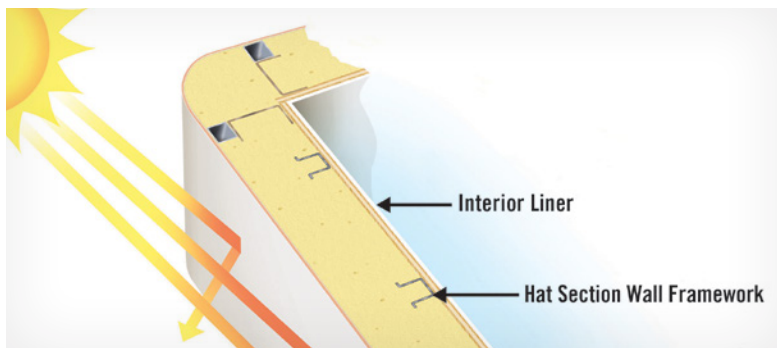
The walls and ceiling of the Johnson S-Series are lined with fiberglass composite, with every seam sealed to maintain a constant temperature.

Seamless Fiberglass Design

The seamless fiberglass exterior is the first barrier against ambient conditions. The formed fiberglass construction doesn't conduct heat, helping to increase thermal efficiency, while also providing a smooth surface for decal applications.

Panel Foaming Technology

Great Dane's high-pressure foam insulation system produces panels with the highest thermal performance rating in the industry. The result is a significant reduction in energy use to keep products at required temperatures.



Visit greatdane.com to learn more about the Johnson S-Series and Great Dane's full line of trailers, truck bodies, and innovations.



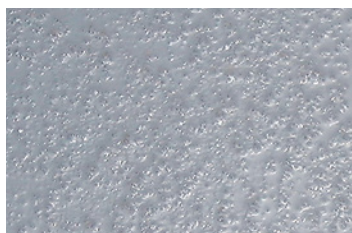
Great Dane

JOHNSON S-SERIES REFRIGERATED SLIDE-IN TRUCK BODY



Floor Strength

The floor is supported by steel crossmembers or floor sills that are completely embedded in urethane foam. The fiberglass floor has a medium grit, non-slip surface for driver safety. Optional poly-slat floor racks maximize air circulation around products and throughout temperature-controlled compartments.



Unique Mounting System

The Johnson S-Series is bolted at the front and rear with Great Dane's unique mounting system, which holds the unit securely in place.

All-Electric Refrigeration System Option

Significantly reduce operating costs and CO2 emissions with cold plate truck refrigeration. These refrigeration systems provide reliable, all-electric temperature control for small- and medium-size truck bodies.



Seamless Fiberglass Rear Door

The fiberglass door design is seamless and completely sealed with a recessed stainless steel interior safety release. The door features internal bracing for added reinforcement, improving durability and maintaining a flat, smooth exterior surface. A neoprene compression gasket creates multiple air chambers for a tight seal and the fiberglass door jambs contribute to thermal efficiency because they do not conduct or transfer heat.

LED Lighting Features

Exterior LED DOT clearance lights are fully sealed and recess-mounted in the roof radius for impact protection. Interior LED lights provide excellent reliability, illumination and ease of lamp replacement.